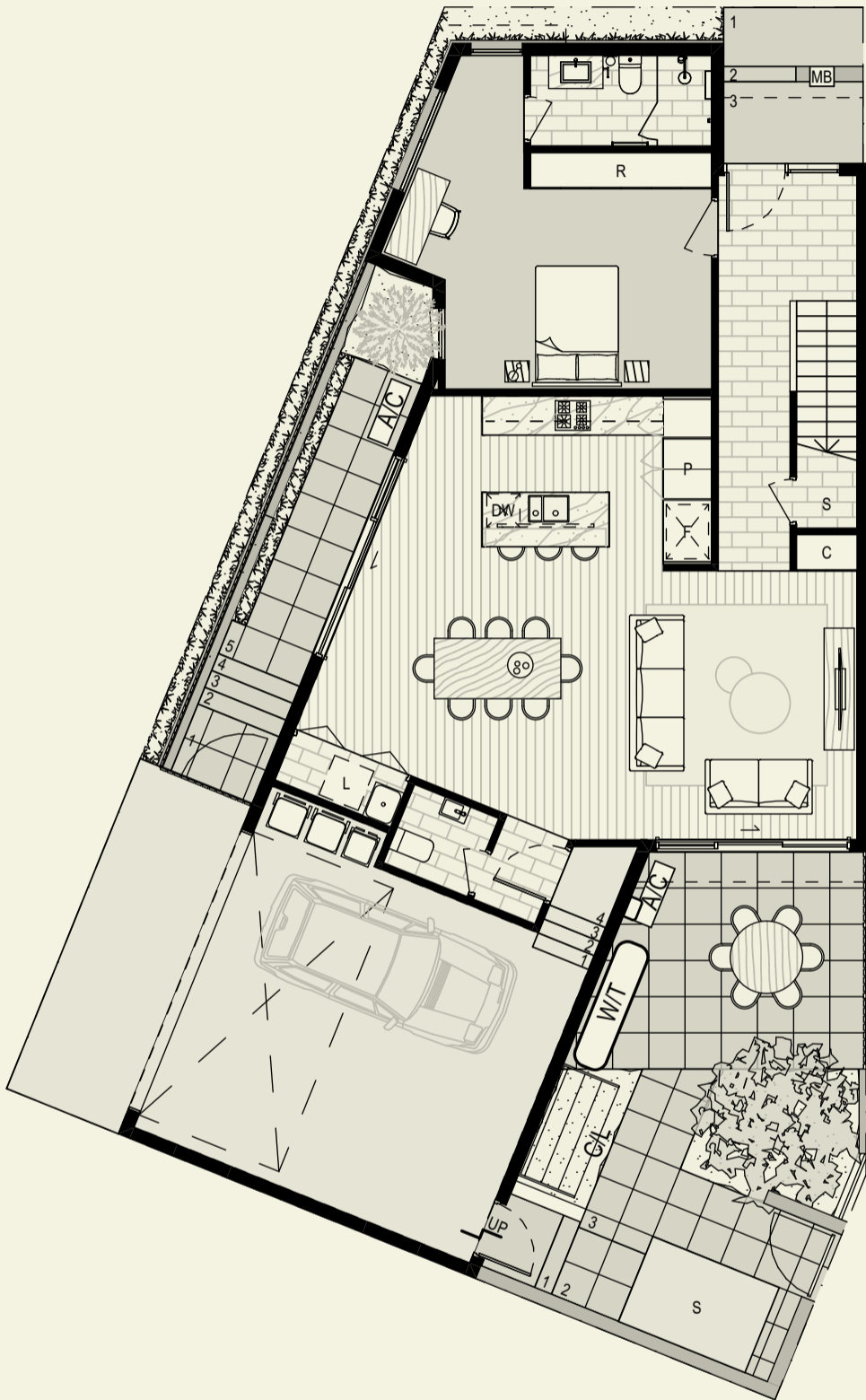
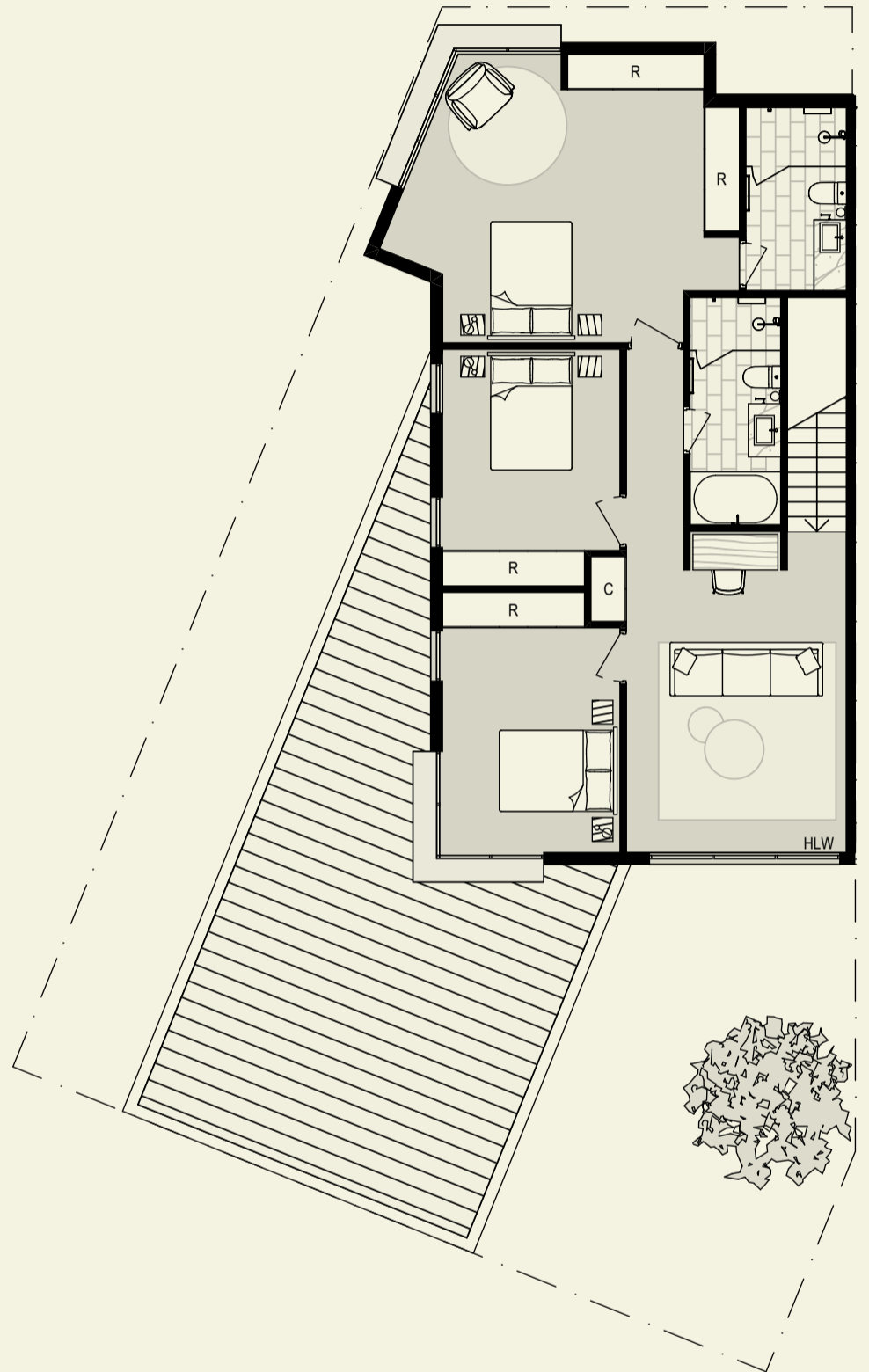


Townhome Type F

4 bedrooms & 3 bathrooms



Ground floor



First floor

Bedroom	4	Ground floor	109.9m ²
Bathroom	3	First floor	95.4m ²
Powder room	1	Garage	37.8m ²
Living	2	Driveway	11.8m ²
Garage car space	2	Front yard	27.6m ²
		Rear yard	40.7m ²
		Total	323.2m ²



Contact

thebottleworksgeelong.com.au